

MYTE

Lifting Equipment

**Manufactured to
SANS & EN Specifications**

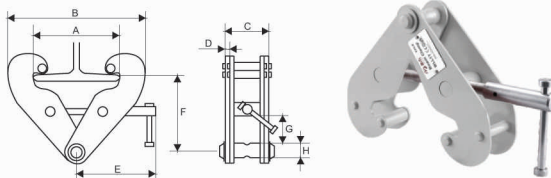
BEAM CLAMPS, CRAWLS & GENERAL LIFTING

HOIST | BEAM CLAMP

BEAM CLAMP

JG

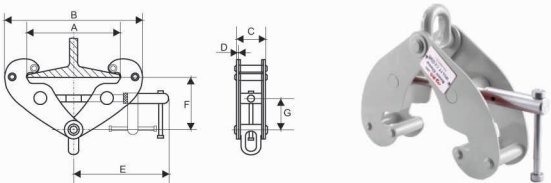
Easy and simple mounting
Special Clamp Jaw design applies loads away from flange edge
Low headroom design, fits wide range of beams and flange widths
Widely option for flange width, which can be made according to customer's requirement.



Model	Capacity kg	Adjustable Beam Width mm	A Max. mm	B Min. mm	B Max. mm	C mm	D mm	E mm	F Min. mm	F Max. mm	G mm	H mm	Weight kg
JG-1	1000	75-230	278	180	370	62	5	230	100	160	30	25	4
JG-2	2000	75-230	278	180	370	67	6	230	100	160	35	28	4.4
JG-3	3000	80-320	356	230	480	100	8	260	125	210	45	32	8.6
JG-5	5000	80-320	356	230	480	110	10	260	125	210	50	38	10.7
JG-10	10000	80-320	356	255	490	115	12	270	170	240	65	43	14.5

BEAM CLAMP

JBC

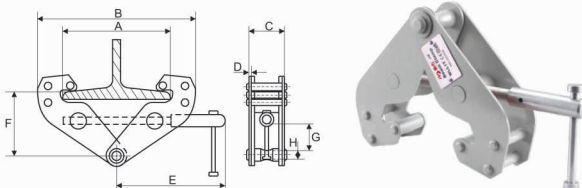


Model	Capacity kg	Adjustable Beam Width mm	A Max. mm	B Min. mm	B Max. mm	C mm	D mm	E mm	F Min. mm	F Max. mm	G mm	Weight kg
JBC-1A	1000	75-245	270	183	375	66	4	210	102	165	25	3.5
JBC-2A	2000	75-245	270	183	375	74	6	210	102	165	25	4.5
JBC-3A	3000	70-355	365	240	520	103	8	258	135	225	45	9.5
JBC-5A	5000	70-355	365	240	520	111	10	258	135	225	45	11
JBC-10A	10000	80-350	365	250	520	120	12	280	160	230	50	16

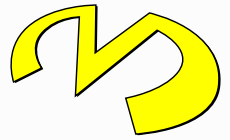
BEAM CLAMP

HEAVY DUTY HD

Special Clamp Jaw design applies loads away from flange edge
Three supporting shaft provides stronger clamping force
Safety factor 5:1 is optional.



Capacity kg	Adjustable Beam Width mm	A Max. mm	B Min. mm	B Max. mm	C mm	D mm	E mm	F Min. mm	F Max. mm	G mm	H mm	Weight kg
1000	75-230	278	182	380	64	4	217	150	90	26	19	4.5
2000	75-230	278	182	380	76	6	217	150	90	25	21	5
3000	80-320	356	220	500	100	8	277	220	145	48	27	9.5
5000	90-320	356	220	500	112	8	277	220	145	45	33	11.3
10000	90-320	356	250	520	120	8	285	230	160	52	39	15.9

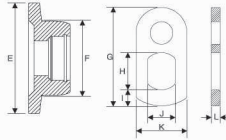
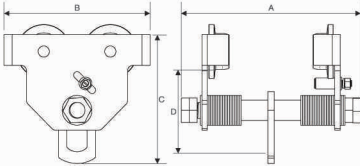


HEAVY DUTY TROLLEY

GCT/GCL619HD

- With protection device to avoid crash
- Forged tight wheel is available with extra cost
- Widely option for flange width
- Can be used for both I beam and H beam

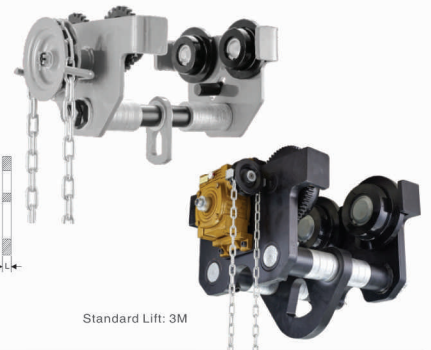
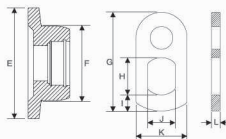
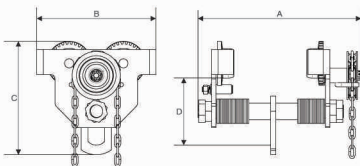
PLAIN TROLLEY



Working Load kg	Flange Width mm	Dimension (mm)				Turning Radius m	Net Weight kg	Wheel Dimension (mm)		Hook Plate Dimension (mm)					
		A	B	C	D			E	F	G	H	I	J	K	L
0.25t	51-153	254	195	172	102	1	3.8	65	45	83	30	15	24	42	6
0.5t	64-203	310	212	195	114	1	5.5	72	52	103	38.5	19	32	57	8
1t	64-203	323	240	222	127	1	9	89	63	107	38.5	19	32	57	10
2t	88-203	335	270	261	155	1.3	16	101.5	68	135	51	22	38	70	12
3t	101-203	350	320	318	186	1.3	24	121.5	92	165	68	25	45	80	14
5t	101-203	375	350	383	231	1.6	41.5	141.5	98	206	85	32	54	120	18
10t	125-203	445	430	415	186	2.5	77	175.5	133	195	114	48.5	85	285	20

**Larger flange width is available with extra cost.

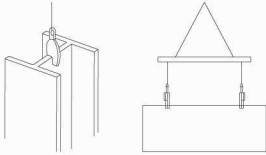
GEARED TROLLEY



Standard Lift: 3M

Working Load kg	Flange Width mm	Dimension (mm)				Turning Radius m	Net Weight kg	Wheel Dimension (mm)		Hook Plate Dimension (mm)					
		A	B	C	D			E	F	G	H	I	J	K	L
0.25t	51-153	275	195	172	102	1	5.8	65	45	83	30	15	24	42	6
0.5t	64-203	363	212	195	114	1	9.5	72	52	103	38.5	19	32	57	8
1t	64-203	371	240	222	127	1	13	89	63	107	38.5	19	32	57	10
2t	88-203	374	270	261	155	1.3	20	101.5	68	135	51	22	38	70	12
3t	101-203	403	320	318	186	1.3	28	121.5	92	165	68	25	45	80	14
5t	101-203	434	350	383	231	1.6	45.5	141.5	98	206	85	32	54	120	18
10t	125-203	385	425	395	198	2.5	84	175.5	133	195	114	48.5	85	285	20
20t	125-330	677	527	500	240	3.5	184	228	170	244	114	60	96	366	35
30t	150-330	693	590	615	313	4.5	292	252	202	325	165	75	145	410	50

**Larger flange width is available with extra cost.



Lifting with cross beam

VERTICAL LIFTING CLAMPS

ECD

- Japan model
- Suitable for vertical lifting of steel plates and steel structures
- Capacity: 0.8-30t
- Made of high-quality low-carbon alloy steel
- It is fitted with a locking device for both open and closed positions, which ensures complete safety
- High-frequency quenching of die-forged special alloy steels enhance the strength and durability of the tooth plate
- The working load is the capacity of one piece. It may be used singly or pairs of clamp used together
- Do not crash the lifted cargos during the lifting and transfer period.

Model	Working Load (kg)	Test Load (kg)	Opening Size (mm)	Net Weight (kg)
ECD-0.8	800	1600	0-15	2.4
ECD-1.6	1600	3200	0-20	5.0
ECD-2.0	2000	4000	0-25	8.0
ECD-3.2	3200	6400	0-25	13
ECD-5.0	5000	10000	0-30	18.5
ECD-8.0	8000	16000	0-45	29.6
ECD-12	12000	24000	50-90	54
ECD-16	16000	32000	60-100	59.5
ECD-20	20000	40000	80-150	145
ECD-25	25000	50000	80-150	145
ECD-30	30000	60000	80-150	148

JERRICAN CLAMPS

YQC



- Suitable for lifting and transfer of steel drum
- It is a light-weight clamp which may be used single-handedly or several clamps



Model	Working Load (kg)	Test Load (kg)	Opening Size (mm)	Net Weight (kg)
YQC-0.6	600	1200	0-300	5.0

CLAMPS FOR PLASTIC DRUM

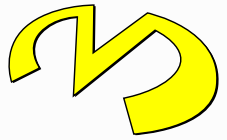
PQC



- Suitable for lifting and transfer of plastic drum
- It is a light-weight clamp which may be used singly or several clamps



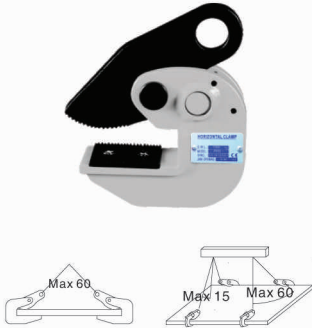
Model	Working Load (kg)	Test Load (kg)	Opening Size (mm)	Net Weight (kg)
PQC-0.45	450	900	450-600	6.0



HORIZONTAL LIFTING CLAMPS

PPD

- Europe model
- Suitable for lifting and horizontal transfer of steel plates and steel structures
- Capacity: 0.8-16t
- Made of high-quality low-carbon alloy steel
- The working load limit is the maximum load when the clamp are used in pairs with a lift angle of 60°. In lifting operation should be used in pairs or multiples



Model	Capacity/pair (kg)	Test Load (kg)	Opening Size (mm)	Net Weight (kg)
PPD-0.8	800	1600	0-25	2.5
PPD-1.0	1000	2000	0-30	3.5
PPD-1.6	1600	3200	0-30	4.0
PPD-2.0	2000	4000	0-40	5.0
PPD-3.2	3200	6400	0-45	6.0
PPD-4.0	4000	8000	0-50	6.5
PPD-5.0	5000	10000	0-55	7.5
PPD-6.0	6000	12000	0-65	10.5
PPD-6.0A	6000	12000	0-130	22
PPD-8.0	8000	12000	0-100	25
PPD-10	10000	15000	0-125	33
PPD-16	16000	24000	0-150	52

PIPE LIFTING CLAMPS

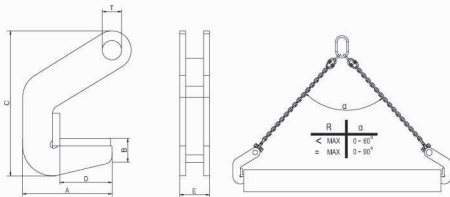
TPH

- Europe model
- Suitable for horizontal lifting and transfer of steel and concrete pipes
- Capacity: 1.5T-20t
- Compact shape and relatively low weight with a high lifting capacity
- The working load is the capacity of one pair. Pairs of clamp should be used together
- Do not crash the lifted cargos during the lifting and transfer period
- The connecting shackle is available at extra cost



WITH SURFACE PROTECTION

- Note:
1. The protection for clamp with capacity 1.5T-12t is PU pad.
 2. The protection for clamp with capacity 16T-20t is TEFLON pad.



Optional shackle and pin at extra cost

Model	Capacity/pair (kg)	Opening Size (mm)	Dimension (mm)							Net Weight (kg)	Shackle (G2130)
			A	B	C	D	E	T			
TPH1.5	1500	40	122	30	195	70	39	Ø25	2.23	7/8"(6.5T)	
TPH3	3000	40	122	30	195	70	39	Ø25	2.58	1"(8.5T)	
TPH4	4000	50	122	30	215	70	39	Ø28	2.90	1"(8.5T)	
TPH6	6000	50	122	30	215	70	39	Ø28	3.50	1-1/8"(9.5T)	
TPH8	8000	70	126	30	240	70	39	Ø28	3.80	1-1/8"(9.5T)	
TPH12	12000	70	160	30	260	90	45	Ø35	6.40	1-1/4"(12T)	
TPH16	16000	70	168	30	272	90	50	Ø37	9.20	1-1/2"(17T)	
TPH18	18000	70	183	30	292	90	50	Ø37	9.40	1-3/4"(25T)	
TPH20	20000	70	220	30	333	90	50	Ø45	19	1-3/4"(25T)	

CONCRETE PIPE LIFTING CLAMP

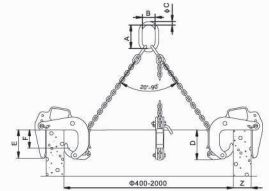
TLG



- Lifting gear for the vertical transport of concrete pip and culverts must be vert versatile. Most important, it must bu absolutely safe and easy to handle under even the harshest conditions.
- It is a three-legged lifting system for the safe and non-marring transport of concrete pipes up to a diameter of Ø2000mm and a load of up to 3t. The jaw capacity is designed for concrete pup thickness from 40-200mm.
- Attachment and removal of the clamps can be done easily due to the handles that have been incorporated into each clamp.
- Features: solid construction, safety factor 4:1, simple and safe handling, large jaw capacity, for the toughest operating conditions, Light weight design.

Model	Capacity/pc (kg)	Opening Size (Z) (mm)	Opening Depth (E) (mm)	Pressure Line (F) (mm)	Net Weight (kg)
TLG1.5/120	1500	40-120	165	100	12.6
TLG3.0/180	3000	50-180	245	175	23.7
TLG3.0/220	3000	90-220	245	175	25

Model	A (mm)	B (mm)	C (mm)	D (mm)
TLG1.5/120	135	75	18	180
TLG3.0/180	180	100	26	310
TLG3.0/220	180	100	26	310



DRUM LIFTER



Up-right Lifting

Side angle lifting

Dump

Double Leg



Capacity (kg)	Chain Size (mm)	Length of lift chain (mm)	Net weight (kg)
1000	6x18	500	3.6

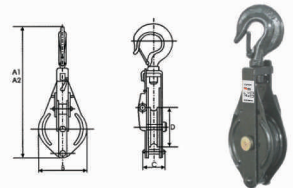


SNATCH BLOCK

DY

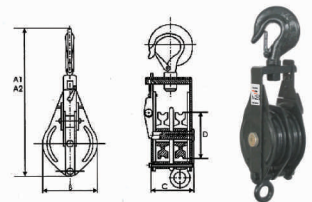
Single Wheel

Type Hook	Eye	S.W.L (t)	Sheave Dia (mm)	Dimension (mm)				For wire dia (mm)	N.W. (kg)
				Hook (A1)	Eye (A2)	B	C		
75DY x 1S	75DY x 1SO	0.5	75	268	227	87	50	8	1.5
100DY x 1S	100DY x 1SO	1.0	100	311.5	284.5	112	55.5	10	2.6
125DY x 1S	125DY x 1SO	1.5	125	370	344	140	63.5	13	4.8
150DY x 1S	150DY x 1SO	2.0	150	442.5	417	168	101	16	7.4
180DY x 1S	180DY x 1SO	3.0	180	498	478	204	107	19	11.9
200DY x 1S	200DY x 1SO	4.0	200	590.5	556	226	128	22	20.4
250DY x 1S	250DY x 1SO	5.0	250	706.5	651	276	147	25	33
300DY x 1S	300DY x 1SO	6.0	300	795	775	330	162	26	48
350DY x 1S	350DY x 1SO	10	350	934	898	395	178	28	66



Double Wheel

Type Hook	Eye	S.W.L (t)	Sheave Dia (mm)	Dimension (mm)				For wire dia (mm)	N.W. (kg)
				Hook(A1)	Eye (A2)	B	C		
75DY X2S	75DY x 2SO	0.5	75	268	227	87	77	8	2.8
100DY x 2S	100DY x 2SO	1.0	100	311.5	284.5	112	88	10	4.3
125DY X2S	125DY x 2SO	1.5	125	370	344	140	100	13	7.8
150DY x 2S	150DY x 2SO	2.0	150	442.5	417	168	146	16	12.2
180DY x 2S	180DY x 2SO	3.0	180	498	478	204	157	19	18.5
200DY x 2S	200DY x 2SO	4.0	200	590.5	556	226	188	22	31
250DY x 2S	250DY x 2SO	5.0	250	706.5	651	276	220	25	49.8
300DY x 2S	300DY x 2SO	6.0	300	795	775	330	238	26	72
350DY x 2S	350DY x 2SO	10	350	934	898	395	260	28	102



SIMPLE TYPE SNATCH BLOCK (BLACK BLOCK)



Casting body with standard wheel

Model	Capacity (kg)	Sheave Dia. (mm)	For Wire Dia. (mm)	N.W. (kg)
B3-75	150	75	22	0.9
B3-100	150	100	22	1.14
B3-120	150	120	22	1.55
B3-140	150	140	26	1.90
B3-160	200	160	26	2.20
B3-180	200	180	28	2.40
B3-190	200	190	28	2.70
B3-200	200	200	28	3.00
B3-220	250	220	28	3.15
B3-250	250	250	30	3.90
B3-300	300	300	32	4.60



Casting body with volute wheel

Model	Capacity (kg)	Sheave Dia. (mm)	For Wire Dia. (mm)	N.W. (kg)
B4-100	150	100	22	1.32
B4-125	150	125	22	1.60
B4-145	150	145	26	1.96
B4-165	200	165	26	2.42
B4-180	200	180	28	2.70
B4-195	200	195	28	3.25
B4-200	200	200	28	3.40
B4-250	250	250	30	4.00



Casting body with protective frame

Model	Capacity (kg)	Sheave Dia. (mm)	For Wire Dia. (mm)	N.W. (kg)
B5-75	150	75	20	1.20
B5-100	150	100	20	1.50
B5-120	150	120	20	1.60
B5-145	150	145	22	1.95
B5-165	200	165	22	2.42
B5-180	200	180	26	2.70
B5-195	200	195	26	3.25
B5-200	200	200	28	3.40
B5-250	250	250	28	4.00



Casting body with protective frame safety latch

Model	Capacity (kg)	Sheave Dia. (mm)	For Wire Dia. (mm)	N.W. (kg)
B6-75	150	75	22	1.10
B6-100	150	100	22	1.20
B6-125	150	125	22	1.40
B6-145	150	145	26	1.55
B6-165	200	165	26	2.00
B6-180	200	180	28	2.25
B6-195	200	195	28	3.10
B6-200	200	200	28	3.35
B6-250	250	250	30	3.86